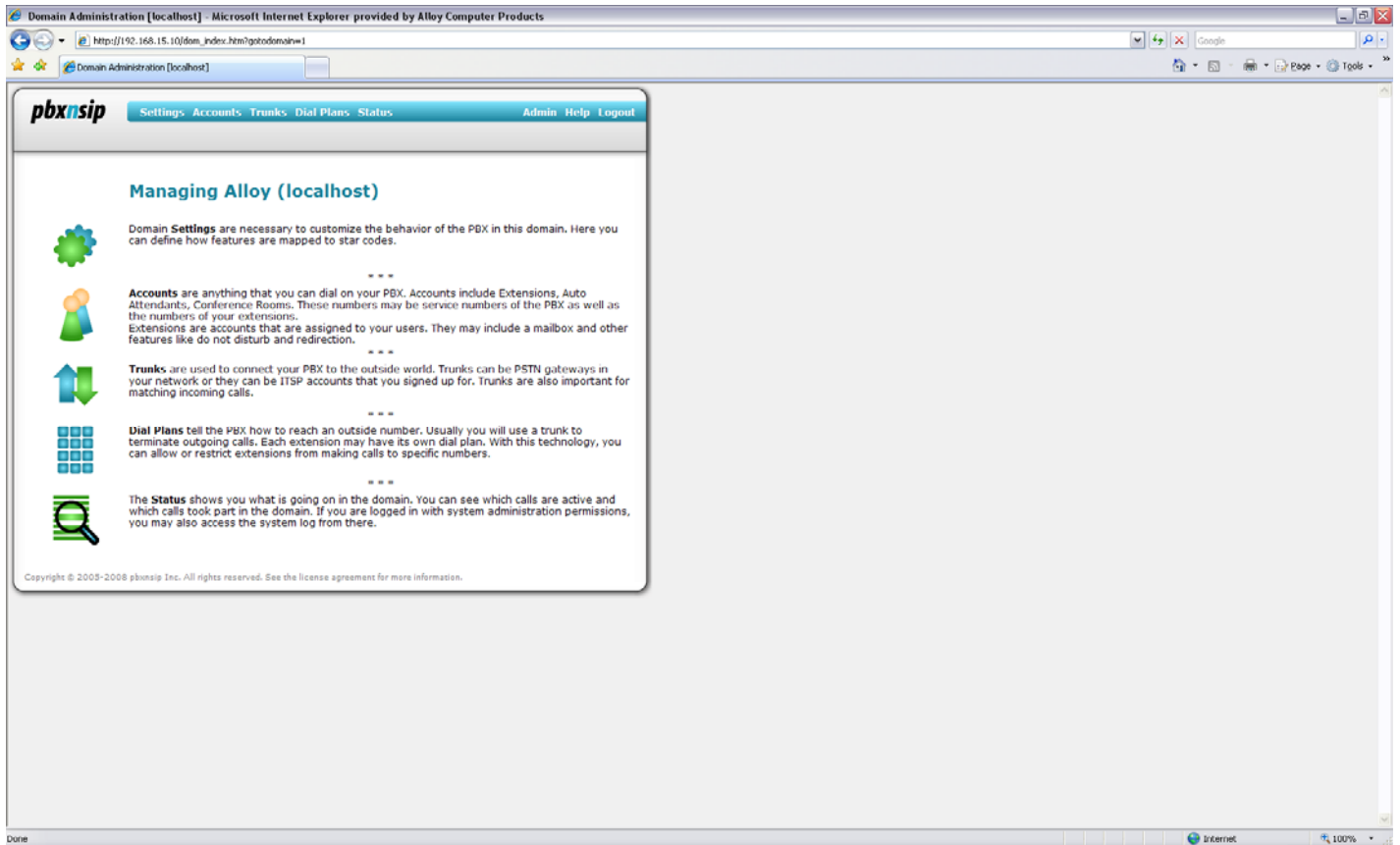


Date: 14/07/08  
Revision Date (6 months max):

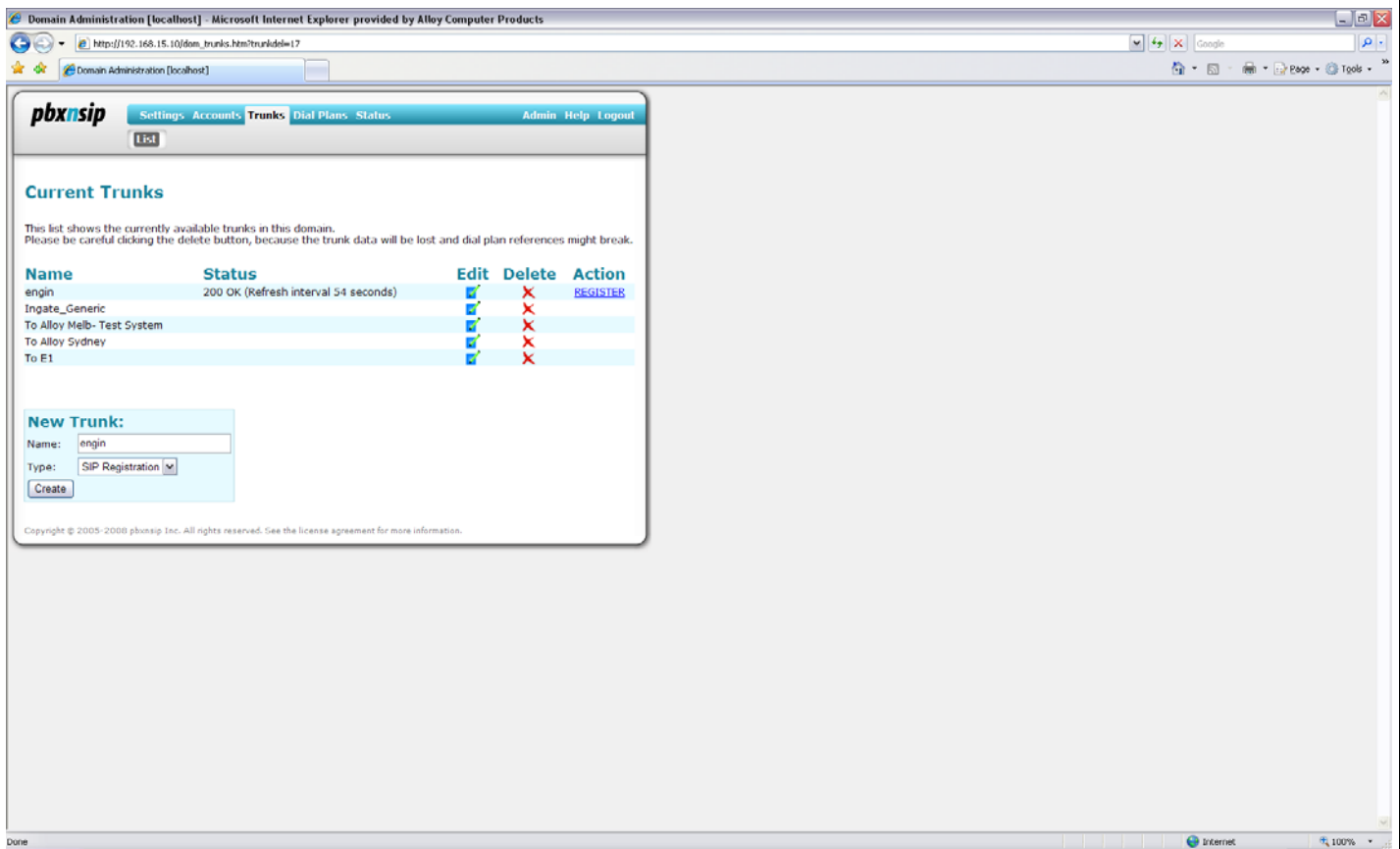
Topic / Issue: **Configuring an ITSP account**

Written By: Steven Sismanis

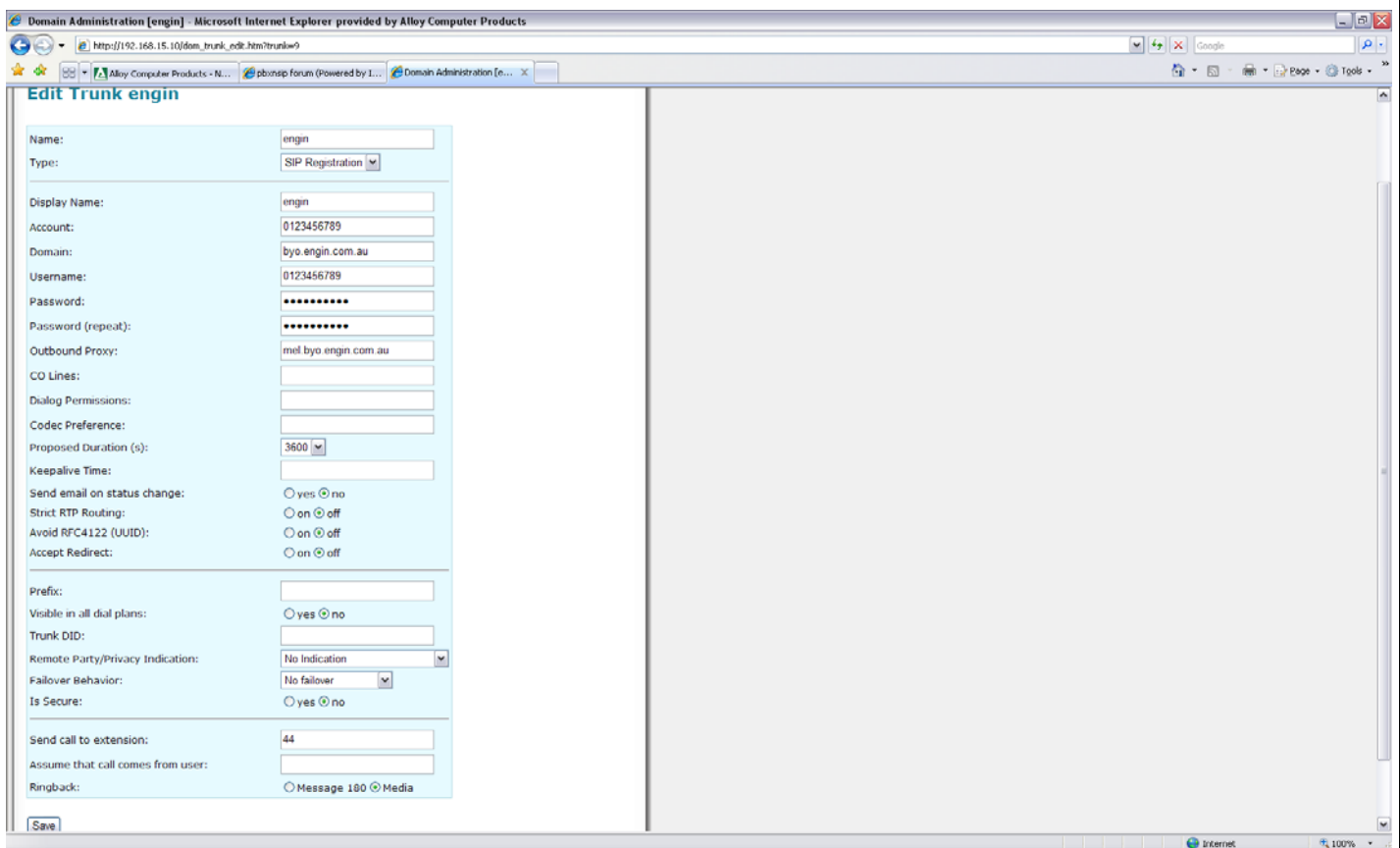
The following guide describes how to configure an ITSP account for both inbound and outbound calls on PBXnSIP.



From the Managing Local Host page, select Trunks to view/add a new trunk



Enter in your ITSP carriers name and set the type to Sip Registration, then Click Create. Once you have created your ITSP's name you can then edit the entry to enter in your ITSP carrier registration details.



At the bottom of the screen you have an option to "Send call to extension"; this is the extension that any inbound call will be routed to through your ITSP in dial number.

Once all your ITSP information has been entered in, go to Dial Plans from the Managing Local Host page and click edit.

The screenshot shows a web browser window titled "Domain Administration [localhost] - Microsoft Internet Explorer provided by Alloy Computer Products". The address bar shows "https://192.168.15.10/dm\_dialplans.htm". The page content includes a navigation menu with "Settings", "Accounts", "Trunks", "Dial Plans", and "Status". Below the menu, there are links for "Admin", "Help", and "Logout". The main heading is "Current Dial Plans". A warning message states: "This list shows the currently available dial plans on this system. Please be careful clicking the delete button, because the dial plan will be deleted permanently." Below this is a table with one row containing the name "Global", an "Edit" button with a pencil icon, and a "Delete" button with a red 'X' icon. Underneath the table is a "New Dial Plan:" section with a "Name:" label, an input field, and a "Create" button. At the bottom of the page, there is a copyright notice: "Copyright © 2005-2008 pbxnsip, Inc. All rights reserved. See the license agreement for more information." The browser's status bar at the bottom shows "English (United States)", "Internet", and "100%".

Domain Administration [localhost] - Microsoft Internet Explorer provided by Alloy Computer Products

https://192.168.15.10/dm\_dialplans.htm

Domain Administration [localhost]

**pbxnsip** Settings Accounts Trunks **Dial Plans** Status Admin Help Logout

### Current Dial Plans

This list shows the currently available dial plans on this system. Please be careful clicking the delete button, because the dial plan will be deleted permanently.

| Name   | Edit | Delete |
|--------|------|--------|
| Global |      |        |

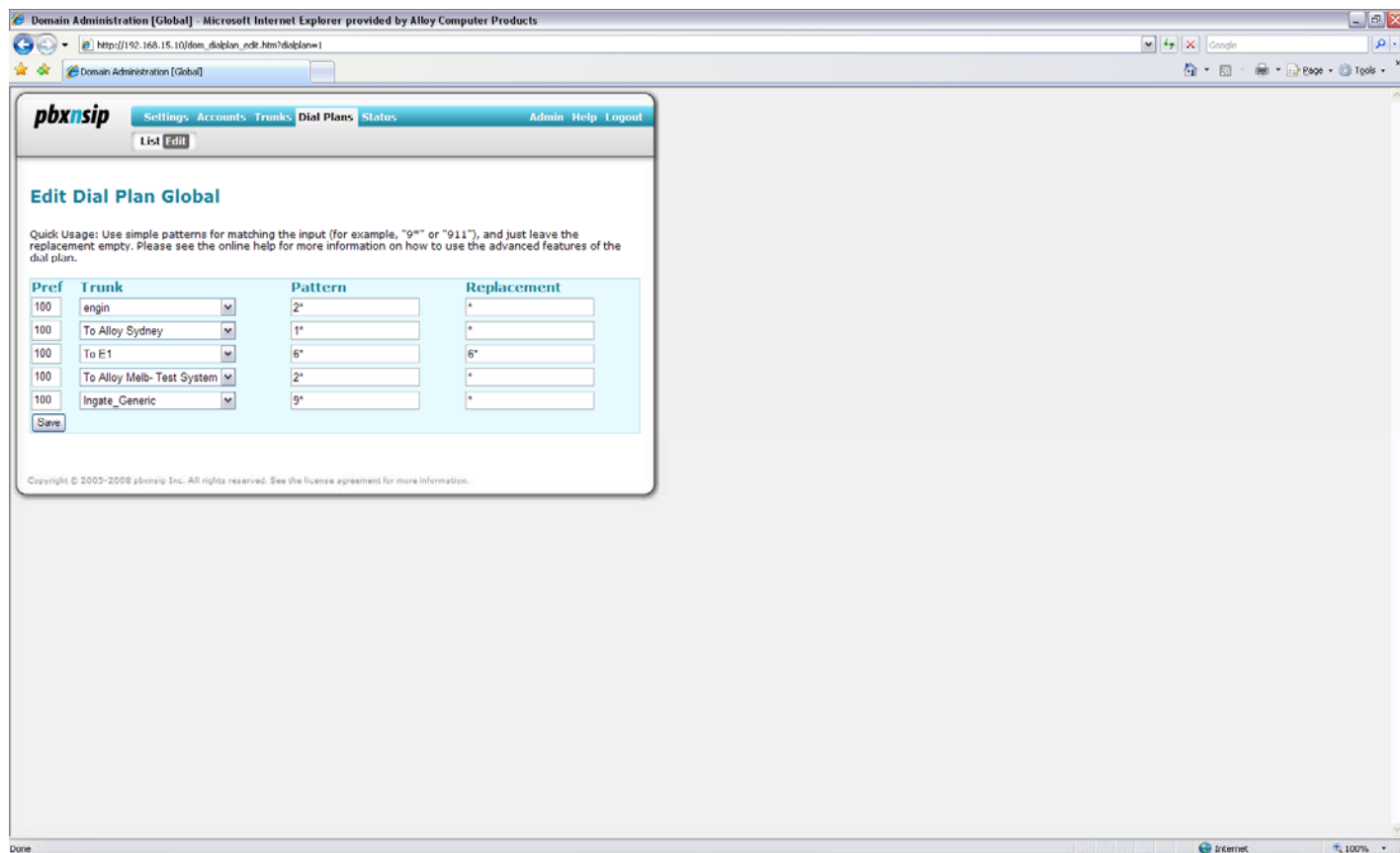
**New Dial Plan:**

Name:

Copyright © 2005-2008 pbxnsip, Inc. All rights reserved. See the license agreement for more information.

English (United States) Internet 100%

Select your account that you have just created from the drop down box under the Trunks column, give it a pattern (or prefix) to use when dialing out of the account followed by a star (wildcard entry) which will allow you to dial any number of digits after prefixing this number. Also enter in a star digit in the replacement field.



Once all the details have been entered in check the previous "Current Trunks" page to make sure your account is registered. If your account displays as Registered OK you should now be able to dial out and receive calls through the account.